





CHATSFORD
The Lifestyle Choice

Chiswick C

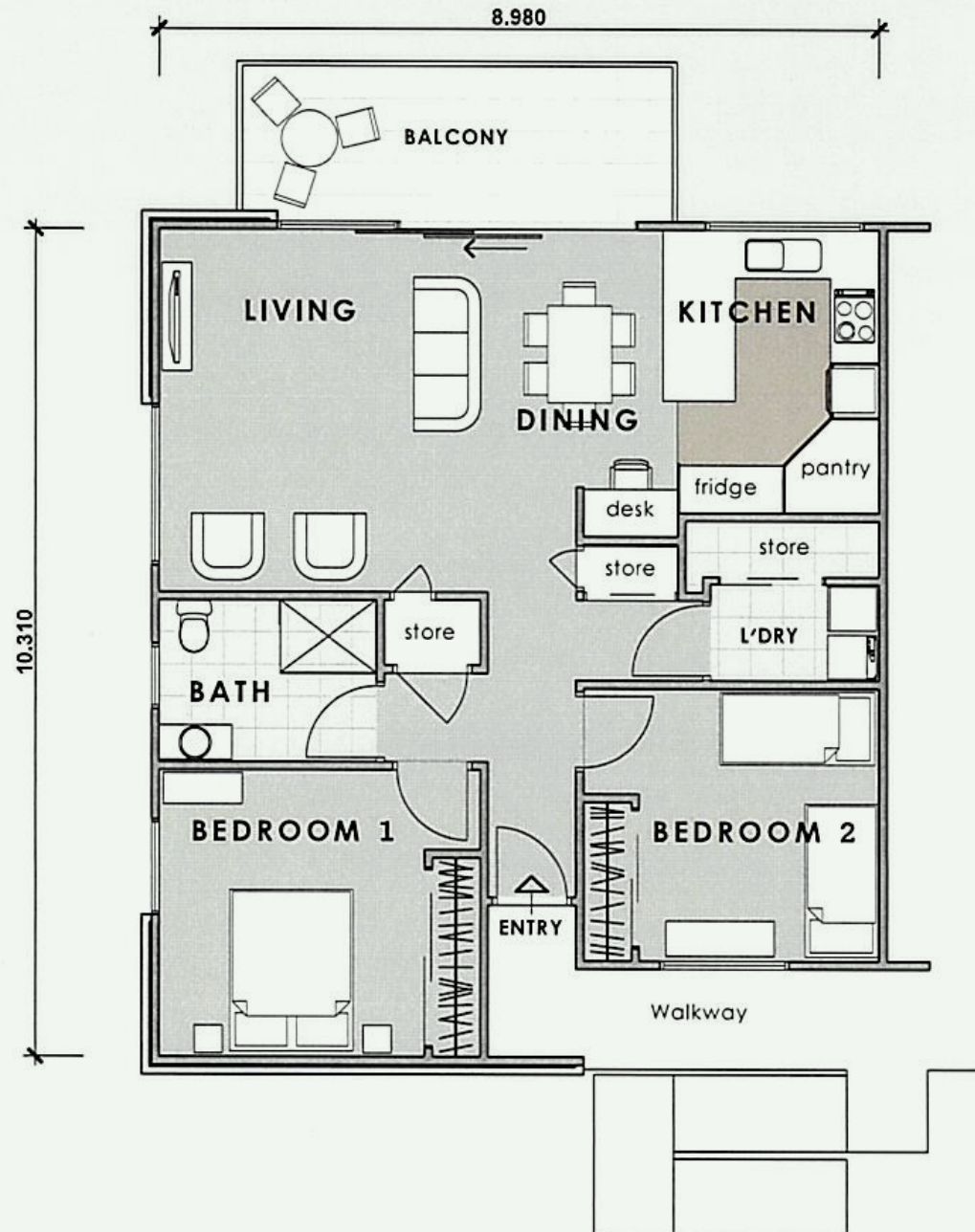
With two upper floor options and two ground floor options, these special homes are situated on each corner of the apartment complex. As with all the Salisbury Apartments, the Chiswick C is well positioned to capture the maximum amount of sunshine.

Size: 89.2 sqm

 2 Bedroom

 1 Bathroom

 1 Carport



Draftplan - Please check the home you are buying